

Developing drugs for reimbursement - current and future challenges for statisticians

Martin Scott
Numerus

ROeS Dornbirn 2013

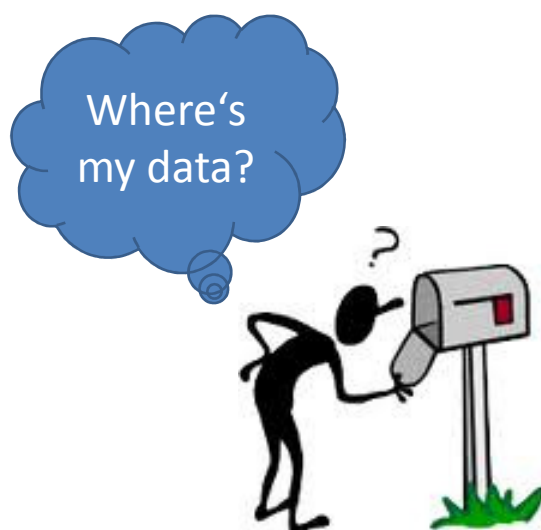
Challenges – past, present and future



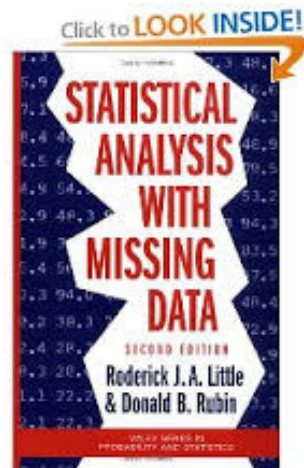
Past challenges?

- Many

Missing data



Missing data



Current challenges?

- Many

Missing data and reimbursement



The four hurdles



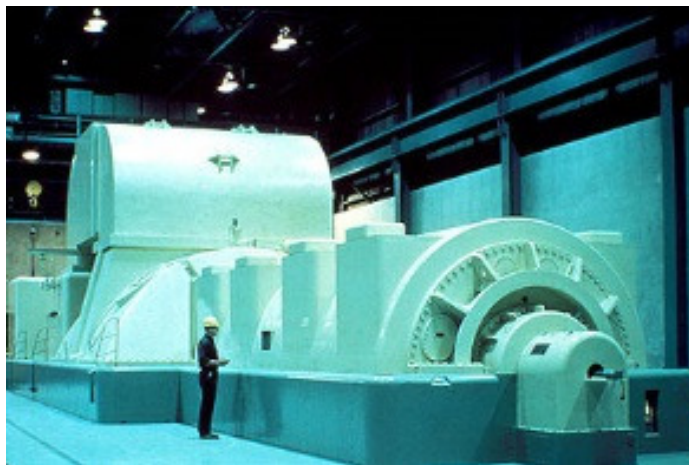
The four **only** hurdles

numerus
Discover Statistical Power



Generate data

numerus
Discover Statistical Power



Our quest to generate data



Generate data

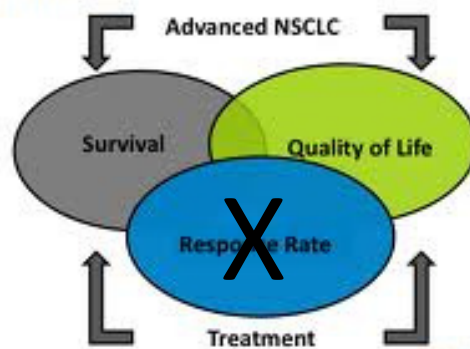
What are the HTA
requirements?

Choose the right population



Choose the right endpoints

Relationship Between Endpoints and Treatment



Plan (and power?) for subgroups




Our enemy



Our enemy

numerus
Discover Statistical Power

Finance
Department



Requires investment

numerus
Discover Statistical Power



What type of data for HTA?

Real world data

Real world data

- “...data collected under real life practice circumstances”

(Lieven Annemans et al – ISPOR task force)

Real world data

- “...data collected under **real? life? practice?** circumstances”


(Lieven Annemans et al – ISPOR task force)

numerus
● ● ● Discover Statistical Power

Do we already have a way forward?

numerus
Discover Statistical Power

Which way?



The ITT Way

numerus
Discover Statistical Power

ICH – E9

- **Intention-to-treat principle:** The principle that asserts that the effect of a treatment policy...

...subjects should be followed up, **assessed**, and analyzed as members of that group **irrespective** of their compliance with the planned course of treatment

ITT – a full house



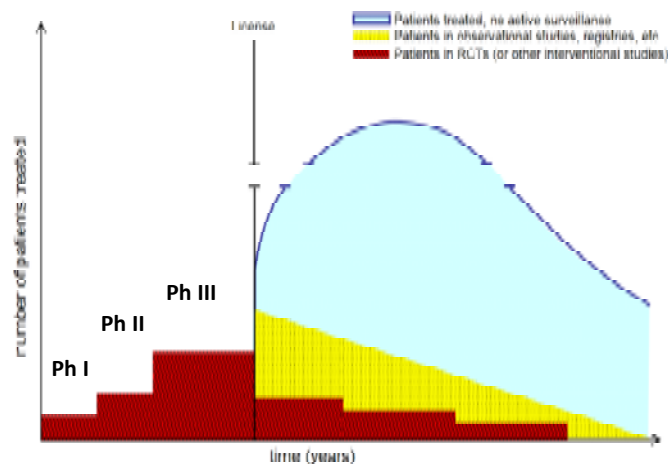
Investment



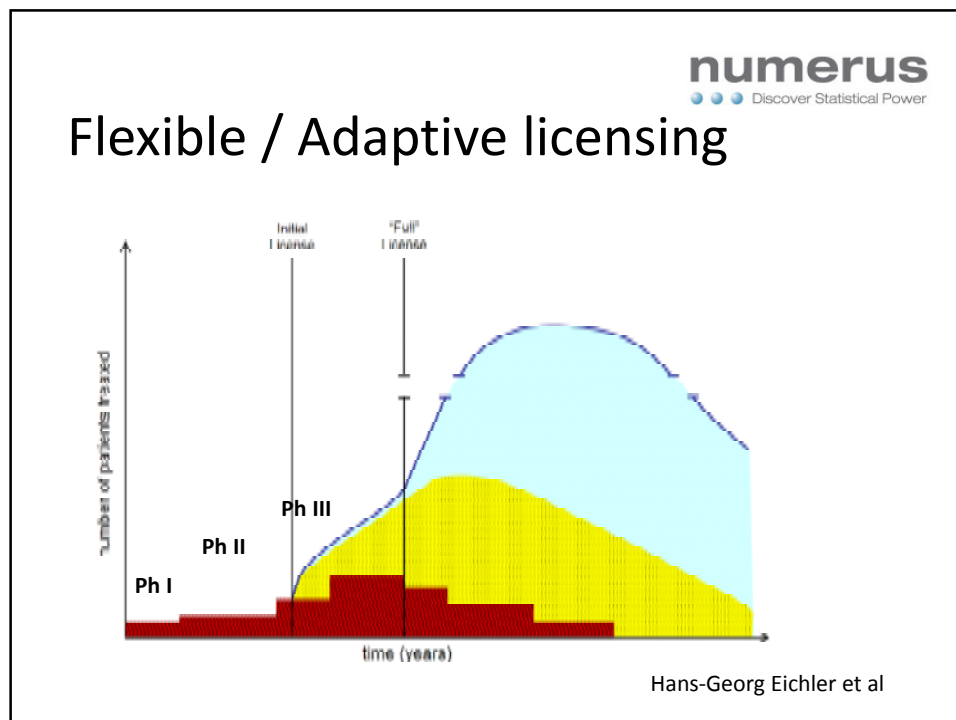
Generate data

- When is the data going to be generated?
- What's the cost? Who will pay?

Current licensing



Hans-Georg Eichler et al



numerus
Discover Statistical Power

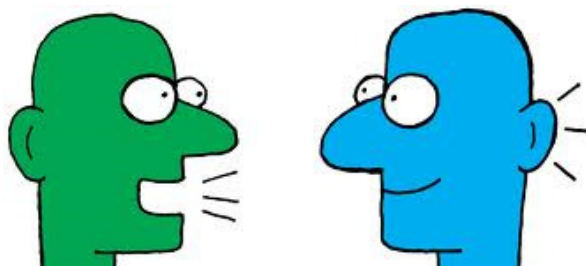
Adaptive Licensing

- Licence at end of phase II (conditional on further trials)
- Conduct **BIG** phase III on “real world data”, controlled or uncontrolled

Challenges for statisticians

- Which data do we collect for phase II?
Which for phase III?
- What is convincing proof at phase II?
- How do we allocate type I / II error
between phases II and III?
- If uncontrolled, how do we control?
Which methods are available?

Biggest challenge for statisticians



Communicate